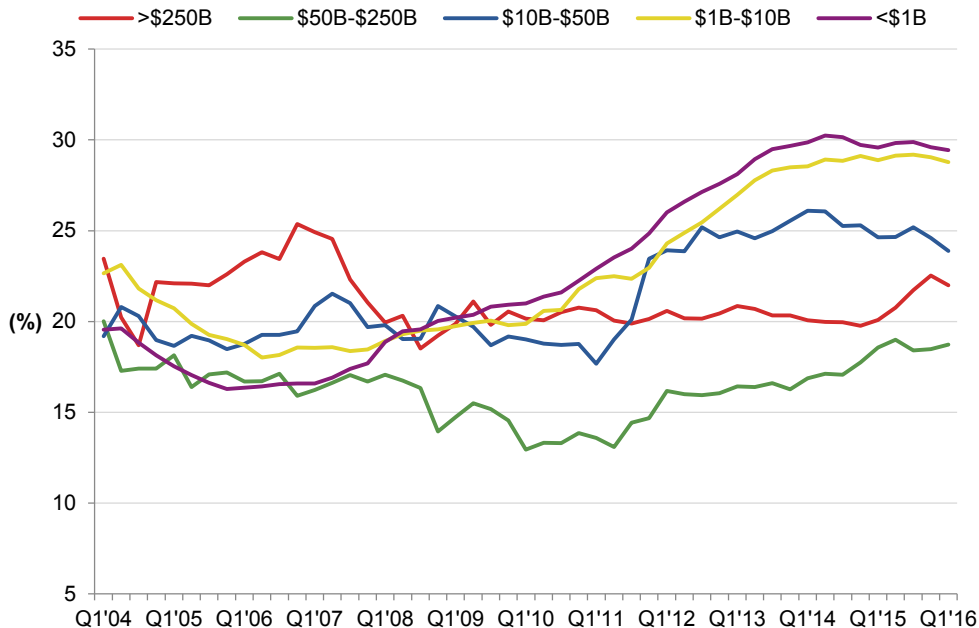


Long-term asset concentration at US banks, thrifts



Data compiled May 31, 2016.

Based on regulatory filings.

Analysis includes all commercial banks and savings banks. Excludes nondepository trusts.

Includes assets expected to mature or reprice in five years or more as a percentage of total assets.

Source: SNL Financial, an offering of S&P Global Market Intelligence